

Summary Highlights for the 1-Mile, 3-Mile and 5-Mile Radii from the Target Address

	1-Mile Radius		3-Mile Radius		5-Mile Radius	
<i>Population Characteristics</i>	<i>Number</i>	<i>Percentage</i>	<i>Number</i>	<i>Percentage</i>	<i>Number</i>	<i>Percentage</i>
Population	139,909		1,797,423		3,181,629	
Population Density (per mile)	4,503		56,863		39,186	
Median Age	39.3		37.7		37.2	
Households	78,918		571,387		1,043,139	

<i>Income Statistics</i>	<i>Number</i>	<i>Percentage</i>	<i>Number</i>	<i>Percentage</i>	<i>Number</i>	<i>Percentage</i>
Median Income	\$100,935		\$94,848		\$77,927	
Mean Income	\$160,393		\$154,612		\$122,979	
Gross Income	\$12,657,871,099		\$88,343,229,705		\$128,284,504,023	
Households With Earnings		81.4%		82.3%		80.7%

<i>Housing Statistics</i>	<i>Number</i>	<i>Percentage</i>	<i>Number</i>	<i>Percentage</i>	<i>Number</i>	<i>Percentage</i>
Total Housing Units	78,918		571,387		1,043,139	
Owner Occupied Units	19,912	25.2%	165,521	29.0%	256,791	24.6%
Renter Occupied Units	59,006	74.8%	405,866	71.0%	786,348	75.4%
Rental Vacancy %		4.9%		4.6%		4.4%

<i>Racial Characteristics</i>	<i>Number</i>	<i>Percentage</i>	<i>Number</i>	<i>Percentage</i>	<i>Number</i>	<i>Percentage</i>
Caucasian Population	103,864	74.2%	864,041	74.6%	1,424,483	60.8%
Black or African American Population	6,611	4.7%	58,772	5.1%	261,817	11.2%
American Indian Population	387	0.3%	3,195	0.3%	7,349	0.3%
Asian Population	19,920	14.2%	123,263	10.6%	339,086	14.5%
Other Races Population	9,127	6.6%	109,649	9.4%	311,220	13.2%
Hispanic Population	18,637	13.3%	274,287	23.7%	638,578	27.2%

<i>Transportation Statistics</i>	<i>Number</i>		<i>Number</i>		<i>Number</i>	
Conservative Vehicle Estimate	17,037		207,605		429,593	
Average Commuting Time	27.5		29.8		32.2	

<i>Education Statistics</i>	<i>Number</i>	<i>Percentage</i>	<i>Number</i>	<i>Percentage</i>	<i>Number</i>	<i>Percentage</i>
Population Enrolled in School	19,992	14.3%	215,455	18.6%	486,970	20.8%
Population Achieving College Degrees	88,498	76.5%	612,428	67.9%	969,356	55.5%

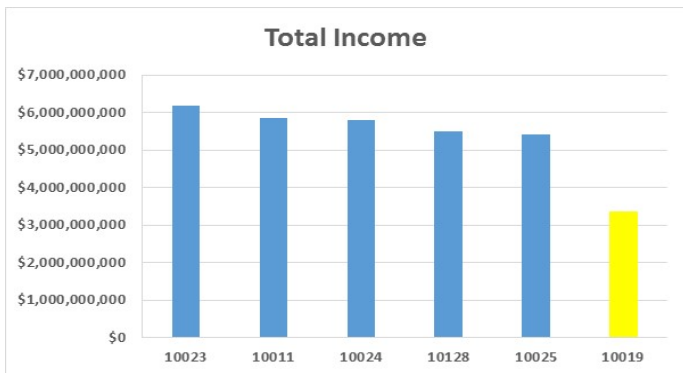
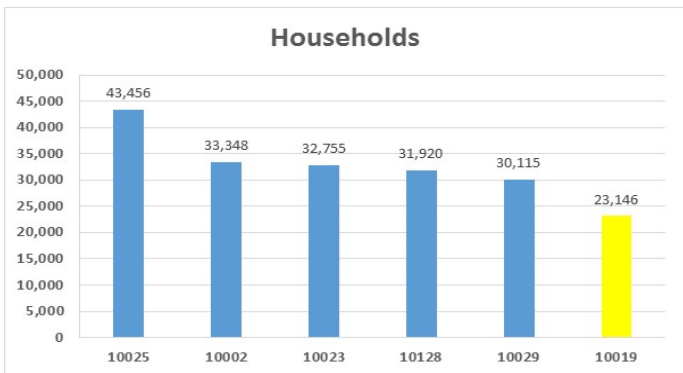
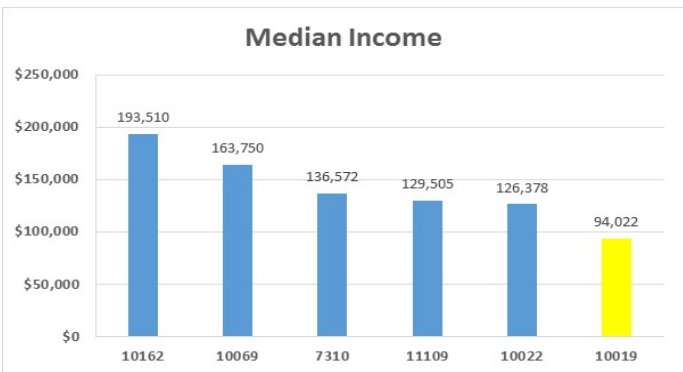
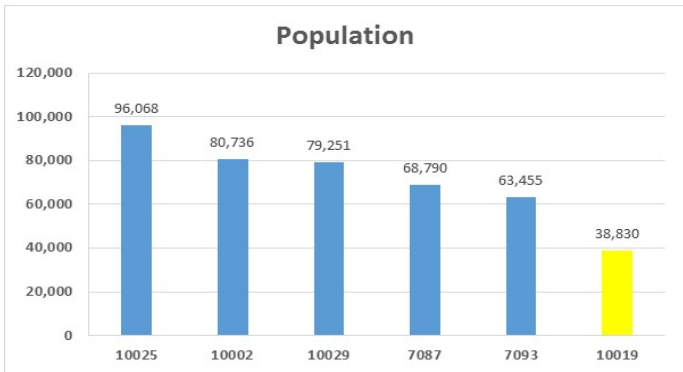
This report contains information about demographics. The information is not advice, and should not be treated as such. You must not rely on the information in the report as an alternative to legal, financial or accounting advice from an appropriately qualified professional. If you have any specific questions about any legal, financial or accounting matter you should consult an appropriately qualified professional. CRE Demographics does not represent, warrant, undertake or guarantee that the information in the report is correct, accurate, complete or non-misleading or that the use of guidance in the report will lead to any particular outcome or result.

Summary Highlights for the Zip Codes within a 5-Mile Radius of New York, NY 10019

Zip Code	Miles From Target	Town	Population	Population Density Per Square Mile	Households	Median Income	Total Income	Median Age
10019	0.00	New York, NY	38,830	56,439	23,146	\$94,022	\$3,350,452,938	39.2
10036	0.54	New York, NY	25,799	58,768	15,455	\$75,966	\$1,790,214,470	37.0
10069	0.61	New York, NY	5,526	57,563	2,850	\$163,750	\$659,105,250	34.6
10023	0.76	New York, NY	60,586	123,645	32,755	\$111,478	\$6,177,593,000	42.1
10018	0.86	New York, NY	9,168	28,384	4,712	\$105,500	\$680,502,328	30.7
10001	1.15	New York, NY	23,537	38,272	11,639	\$86,801	\$1,841,091,937	35.6
7086	1.32	Weehawken, NJ	13,215	16,602	5,718	\$75,388	\$669,286,182	37.7
10022	1.39	New York, NY	30,607	71,679	17,892	\$126,378	\$4,195,530,864	45.5
10017	1.41	New York, NY	16,472	51,962	10,157	\$106,421	\$1,632,483,825	37.4
10065	1.55	New York, NY	30,237	79,571	16,742	\$112,869	\$3,439,593,674	38.7
7093	1.57	West New York, NJ	63,455	53,324	23,547	\$47,611	\$1,623,706,932	35.1
10016	1.72	New York, NY	50,641	95,190	28,390	\$104,826	\$4,342,080,160	33.4
10011	1.73	New York, NY	52,349	79,077	29,762	\$109,818	\$5,857,667,554	39.5
10021	1.76	New York, NY	43,573	114,365	23,739	\$115,076	\$5,179,375,020	39.5
10075	1.95	New York, NY	25,756	139,978	14,145	\$111,691	\$2,905,453,725	44.1
7087	2.02	Union City, NJ	68,790	53,408	23,075	\$41,197	\$1,285,023,675	34.7
10010	2.02	New York, NY	31,447	82,322	16,050	\$101,718	\$2,487,412,950	34.6
10028	2.15	New York, NY	46,883	149,786	24,941	\$114,939	\$5,079,932,998	39.6
10162	2.18	New York, NY	1,289	107,417	671	\$193,510	\$145,024,572	44.4
10044	2.19	New York, NY	11,783	51,230	4,622	\$91,383	\$540,196,250	40.9
7047	2.21	North Bergen, NJ	62,570	12,044	21,676	\$55,222	\$1,517,796,872	36.0
10024	2.21	New York, NY	58,391	68,055	28,675	\$113,839	\$5,792,493,375	42.5
11109	2.38	Long Island City, NY	4,702	94,040	2,560	\$129,505	\$396,938,240	31.9
10014	2.46	New York, NY	30,727	55,867	18,786	\$113,973	\$3,369,738,750	37.0
10128	2.47	New York, NY	61,927	132,891	31,920	\$100,200	\$5,507,221,440	39.1
10003	2.48	New York, NY	57,112	99,153	27,487	\$98,151	\$4,444,428,004	32.1
7030	2.53	Hoboken, NJ	52,452	41,995	24,579	\$114,381	\$3,711,994,317	31.4
10025	2.62	New York, NY	96,068	127,750	43,456	\$74,065	\$5,420,657,984	40.3
10009	2.84	New York, NY	60,865	98,647	29,770	\$59,090	\$2,536,612,390	37.0
10012	2.89	New York, NY	24,163	74,808	12,470	\$100,859	\$1,763,632,100	34.2
10029	3.05	New York, NY	79,251	97,600	30,115	\$31,350	\$1,829,666,940	33.3
10002	3.12	New York, NY	80,736	91,850	33,348	\$33,726	\$2,065,775,208	40.8
11106	3.17	Astoria, NY	38,812	45,394	17,004	\$54,109	\$1,217,843,484	36.4
10026	3.26	New York, NY	38,310	115,392	14,527	\$47,264	\$1,159,472,505	34.2
11101	3.28	Long Island City, NY	25,880	9,939	11,772	\$48,013	\$914,413,644	36.1
10013	3.32	New York, NY	27,415	49,845	11,558	\$96,667	\$2,807,149,250	36.9
7307	3.40	Jersey City, NJ	44,400	19,848	15,929	\$54,696	\$1,151,730,416	34.3
11102	3.46	Astoria, NY	35,271	44,703	14,039	\$51,123	\$997,204,209	33.4
7310	3.51	Jersey City, NJ	13,156	21,781	5,809	\$136,572	\$884,408,632	30.9
7022	3.53	Fairview, NJ	14,233	16,904	5,404	\$53,846	\$362,592,188	38.1
11222	3.65	Brooklyn, NY	35,163	22,907	16,689	\$72,409	\$1,458,969,069	34.0
7010	3.68	Cliffside Park, NJ	24,493	25,460	10,473	\$60,979	\$905,841,189	44.1
10282	3.69	New York, NY	5,730	83,043	2,439	\$250,000	\$775,948,338	33.0

Summary Highlights for the Zip Codes within a 5-Mile Radius of New York, NY 10019 (Continued)

Zip Code	Miles From Target	Town	Population	Population Density Per Square Mile	Households	Median Income	Total Income	Median Age
10027	3.75	New York, NY	64,413	74,123	22,937	\$40,782	\$1,606,369,858	30.2
10007	3.75	New York, NY	6,876	43,245	2,781	\$250,000	\$1,227,194,118	35.4
10035	3.77	New York, NY	33,920	23,820	12,999	\$27,424	\$620,819,241	35.2
7094	3.89	Secaucus, NJ	18,170	3,153	6,751	\$86,061	\$735,048,880	40.2
7020	3.96	Edgewater, NJ	11,935	12,792	5,671	\$101,767	\$748,594,684	37.9
10038	4.07	New York, NY	21,464	71,547	9,780	\$76,379	\$1,194,930,180	33.6
11104	4.18	Sunnyside, NY	26,718	68,861	11,540	\$55,294	\$817,355,120	37.7
10280	4.18	New York, NY	9,552	82,345	4,588	\$145,432	\$888,470,788	37.2
11103	4.20	Astoria, NY	39,231	55,177	16,607	\$59,243	\$1,229,250,140	34.1
7302	4.22	Jersey City, NJ	39,964	27,223	19,180	\$102,211	\$2,480,261,700	34.0
10006	4.24	New York, NY	3,110	33,804	1,745	\$123,691	\$283,890,560	31.4
10037	4.27	New York, NY	18,777	73,062	9,109	\$35,491	\$461,744,319	36.1
10005	4.30	New York, NY	8,131	111,384	4,252	\$124,194	\$750,154,848	29.4
11105	4.39	Astoria, NY	37,194	22,113	15,532	\$61,646	\$1,241,892,124	34.3
10030	4.39	New York, NY	29,209	104,692	11,891	\$33,196	\$632,946,039	34.1
7657	4.45	Ridgefield, NJ	11,256	4,411	4,002	\$68,843	\$338,084,958	42.6
11211	4.51	Brooklyn, NY	97,772	42,289	37,381	\$54,406	\$3,148,265,201	30.3
7306	4.51	Jersey City, NJ	55,296	20,322	20,273	\$49,804	\$1,312,129,379	32.8
7311	4.63	Jersey City, NJ	326	9,879	191	\$197,991	\$43,645,028	33.2
11377	4.67	Woodside, NY	90,615	35,717	31,455	\$50,436	\$2,039,605,110	36.7
10031	4.68	New York, NY	59,244	91,285	21,191	\$39,774	\$1,206,276,484	33.8
10454	4.73	Bronx, NY	39,012	37,225	12,790	\$20,210	\$403,307,070	28.1
5-Mile Radius			2,343,955	39,186	1,043,139	\$77,927	\$128,284,492,677	36.1

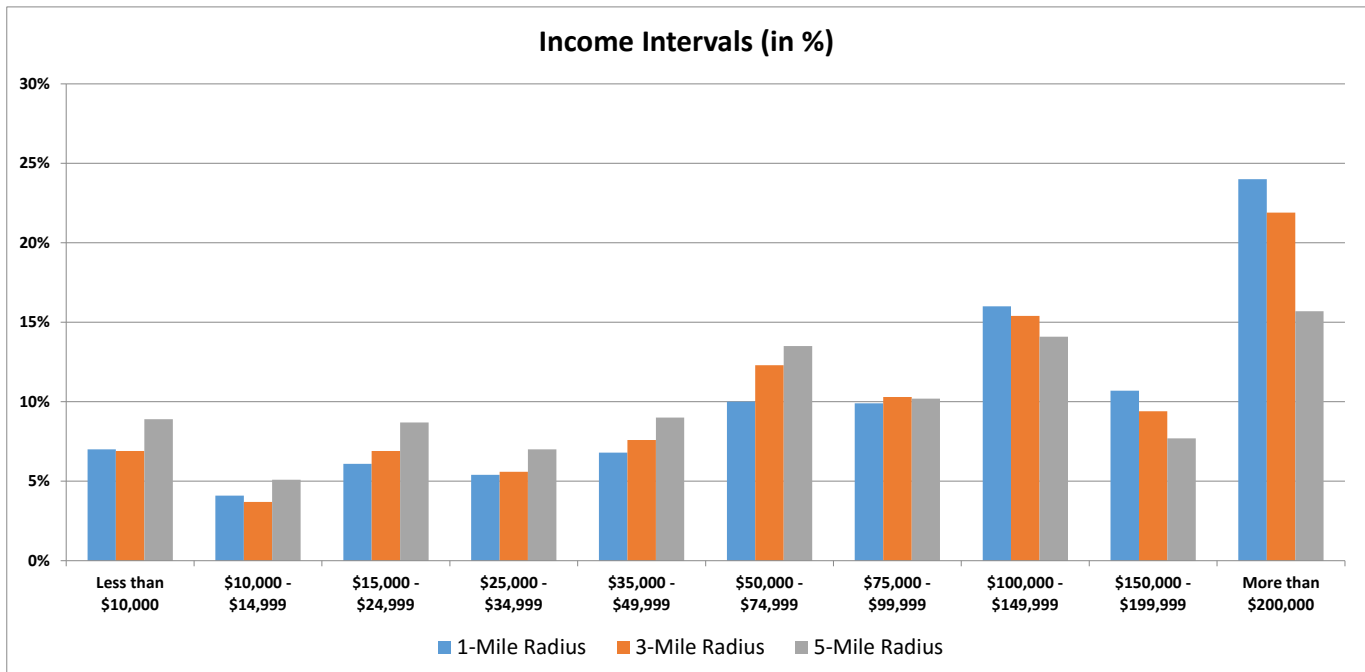


Income Demographics

	1-Mile Radius	3-Mile Radius	5-Mile Radius
Households	78,918	571,387	1,043,139
Median Income	\$100,935	\$94,848	\$77,927
Mean Income	\$160,393	\$154,612	\$122,979
Gross Income	\$12,657,871,099	\$88,343,229,705	\$128,284,504,023
% of Households With Earnings	81.4%	82.3%	80.7%
% of Households With Retirement Income	9.8%	10.1%	9.5%
% Receiving Social Security Payments	20.5%	21.6%	21.3%
% Receiving Supplemental Security Income	2.8%	3.4%	5.4%
% Receiving Cash Public Assistance	1.7%	1.6%	2.7%
% Receiving Food Stamps (any time in 2015)	6.1%	7.7%	12.6%

Household Income Interval Analysis

Intervals	1-Mile Radius	3-Mile Radius	5-Mile Radius
Less than \$10,000	5,495	39,261	93,198
\$10,000 - \$14,999	3,243	21,263	53,607
\$15,000 - \$24,999	4,838	39,443	90,308
\$25,000 - \$34,999	4,280	31,962	73,297
\$35,000 - \$49,999	5,332	43,496	93,609
\$50,000 - \$74,999	7,923	70,258	140,944
\$75,000 - \$99,999	7,846	59,050	106,838
\$100,000 - \$149,999	12,605	87,761	147,106
\$150,000 - \$199,999	8,409	53,722	80,582
More than \$200,000	18,947	125,171	163,650



Housing Demographics

1-Mile Radius
3-Mile Radius
5-Mile Radius

Housing Type

	1-Mile Radius	3-Mile Radius	5-Mile Radius
Occupied Housing Units	78,918	571,387	1,043,139
Owner Occupied Units	19,912	165,521	256,791
Owner Occupied %	25.2%	29.0%	24.6%
Renter Occupied units	59,006	405,866	786,348
Renter Occupied %	74.8%	71.0%	75.4%

Units

	1-Mile Radius	3-Mile Radius	5-Mile Radius
1-Unit Detached	697	12,588	30,645
1-Unit Attached	342	7,732	25,320
2 Units	643	23,691	67,838
3 or 4 Units	716	25,436	78,035
5 to 9 Units	5,560	45,927	104,792
10 to 19 Units	9,357	71,793	124,270
20 or More Units	83,361	478,479	751,228
Mobile Homes	28	364	951

Median # of Rooms	1-Mile Radius	3-Mile Radius	5-Mile Radius
	3.0	3.3	3.5

Unit Values

	1-Mile Radius	3-Mile Radius	5-Mile Radius
<\$100,000	1.9%	3.0%	4.0%
\$100K-\$199K	0.8%	3.2%	3.9%
\$200K-\$299K	3.9%	5.9%	7.9%
\$300K-\$499K	14.7%	16.8%	20.1%
\$500K-\$999K	36.9%	33.3%	34.2%
>\$1,000,000	41.7%	37.8%	29.9%

Gross Rent as a % of Income (GRAPI)

	1-Mile Radius	3-Mile Radius	5-Mile Radius
<20%	31.9%	32.2%	29.2%
20%-24.9%	12.7%	12.5%	12.5%
25%-29.9%	11.3%	11.2%	11.4%
30%-34.9%	10.4%	9.3%	9.6%
35% or more	33.8%	34.8%	37.3%

Values & Rents

	1-Mile Radius	3-Mile Radius	5-Mile Radius
Median Unit Value	\$897,063	\$840,497	\$4,149
% Mortgaged	52.1%	55.9%	57.4%
% Unmortgaged	47.9%	44.1%	42.6%
Median Gross Rent	\$2,200	\$1,882	\$1,606
Rental Vacancy %	4.9%	4.6%	4.4%

Year Units Built

	1-Mile Radius	3-Mile Radius	5-Mile Radius
2010 or Later	2,569	7,198	16,059
2000-2009	16,255	56,689	110,681
1990-1999	8,406	29,004	51,173
1980-1989	7,945	46,754	72,600
1960-1979	18,405	148,753	239,268
1940-1959	10,238	105,084	213,176
Before 1940	36,940	272,949	481,014

Avg. Household Size

	1-Mile Radius	3-Mile Radius	5-Mile Radius
Owner Occupied	1.8	2.0	2.2
Renter Occupied	1.7	1.9	2.2

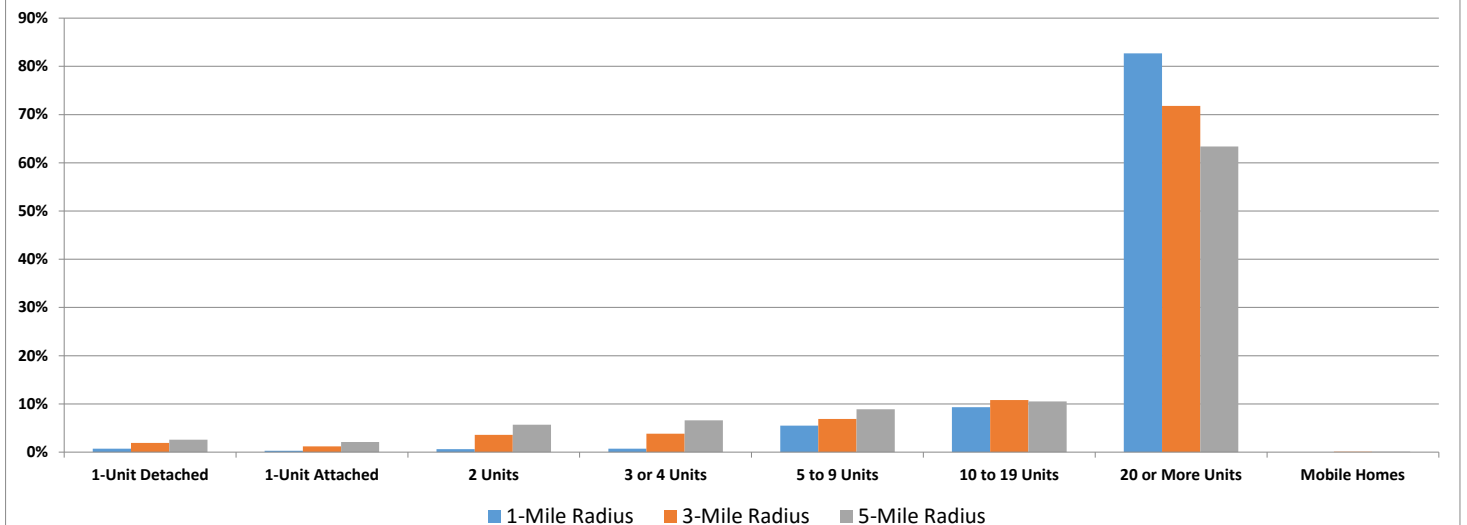
Number of Bedrooms

	1-Mile Radius	3-Mile Radius	5-Mile Radius
0	20.1%	15.8%	12.3%
1	49.3%	42.4%	39.1%
2	22.8%	27.2%	31.5%
3	6.0%	11.4%	13.4%
4	1.0%	2.3%	2.7%
5 or more	0.7%	0.9%	1.1%

Owner Costs as % of Household Income (Mortgaged Units)

	1-Mile Radius	3-Mile Radius	5-Mile Radius
<20%	51.1%	49.0%	43.1%
20%-24.9%	13.2%	11.5%	12.0%
25%-29.9%	9.2%	7.6%	8.5%
30%-34.9%	6.2%	6.9%	7.3%
35% or more	20.4%	25.0%	29.0%

Housing Structures (% of Total)



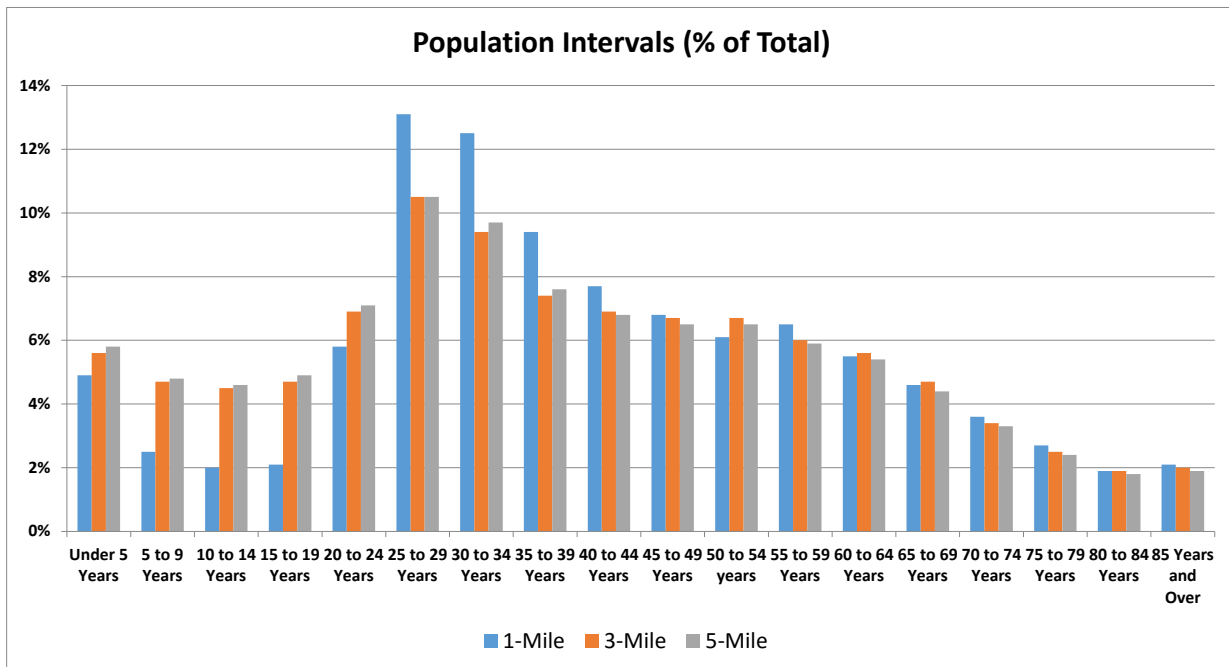
Age Demographics

	1-Mile Radius		3-Mile Radius		5-Mile Radius	
	Number	Percentage	Number	Percentage	Number	Percentage
TOTAL POPULATION	139,909	100.00%	1,797,423	100.00%	3,181,629	100.00%
Under 5 Years	6,866	4.90%	100,692	5.60%	185,250	5.80%
5 to 9 Years	3,446	2.50%	84,112	4.70%	152,504	4.80%
10 to 14 Years	2,811	2.00%	80,384	4.50%	145,887	4.60%
15 to 19 Years	2,922	2.10%	85,120	4.70%	156,113	4.90%
20 to 24 Years	8,147	5.80%	123,801	6.90%	226,118	7.10%
25 to 29 Years	18,304	13.10%	187,928	10.50%	335,427	10.50%
30 to 34 Years	17,550	12.50%	168,273	9.40%	308,033	9.70%
35 to 39 Years	13,202	9.40%	132,535	7.40%	241,323	7.60%
40 to 44 Years	10,723	7.70%	123,405	6.90%	216,053	6.80%
45 to 49 Years	9,503	6.80%	119,553	6.70%	206,880	6.50%
50 to 54 years	8,538	6.10%	120,666	6.70%	206,237	6.50%
55 to 59 Years	9,137	6.50%	108,628	6.00%	186,803	5.90%
60 to 64 Years	7,706	5.50%	100,833	5.60%	173,197	5.40%
65 to 69 Years	6,492	4.60%	83,945	4.70%	140,960	4.40%
70 to 74 Years	5,064	3.60%	61,591	3.40%	105,570	3.30%
75 to 79 Years	3,805	2.70%	45,821	2.50%	77,450	2.40%
80 to 84 Years	2,630	1.90%	33,890	1.90%	57,181	1.80%
85 Years and Over	3,007	2.10%	35,708	2.00%	60,191	1.90%

Median Age	39.3	37.7	37.2
-------------------	------	------	------

Population Density	4,503 per square mile	56,863 per square mile	39,186 per square mile
---------------------------	-----------------------	------------------------	------------------------

16 Years and Over	126,143	90.20%	1,516,130	84.40%	2,668,508	83.90%
18 Years and Over	125,406	89.60%	1,485,445	82.60%	2,610,745	82.10%
20 Years and Over	123,808	88.30%	1,446,577	80.60%	2,541,423	79.80%
62 Years and Over	25,267	18.10%	318,099	17.70%	540,635	17.00%
65 Years and Over	20,939	15.00%	260,561	14.50%	440,932	13.90%
70 Years and Over	14,506	10.30%	177,010	9.80%	300,392	9.40%
80 Years and Over	5,637	4.00%	69,598	3.90%	117,372	3.70%

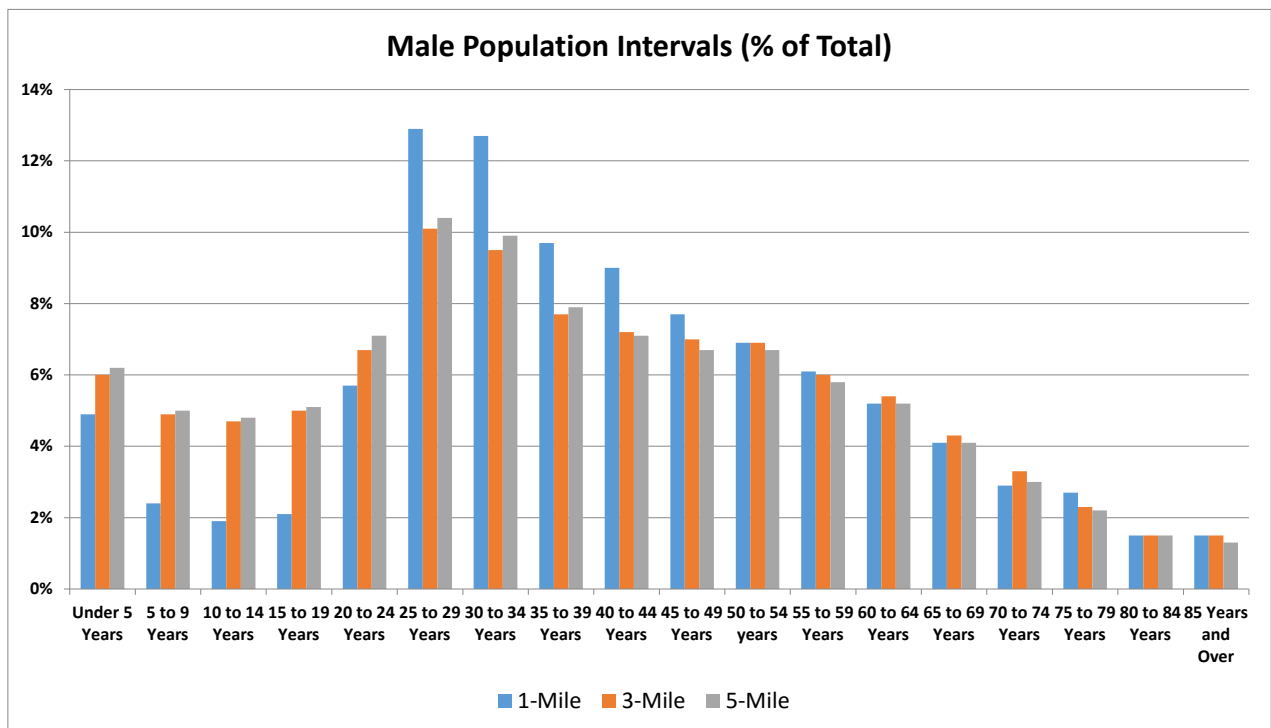


Male Demographics

	1-Mile Radius		3-Mile Radius		5-Mile Radius	
	<i>Number</i>	<i>Percentage</i>	<i>Number</i>	<i>Percentage</i>	<i>Number</i>	<i>Percentage</i>
TOTAL POPULATION	69,619	100.00%	858,363	100.00%	1,535,140	100.00%
Under 5 Years	3,436	4.90%	51,604	6.00%	95,692	6.20%
5 to 9 Years	1,685	2.40%	42,292	4.90%	77,079	5.00%
10 to 14 Years	1,330	1.90%	40,733	4.70%	74,442	4.80%
15 to 19 Years	1,454	2.10%	42,804	5.00%	78,518	5.10%
20 to 24 Years	3,982	5.70%	57,473	6.70%	108,827	7.10%
25 to 29 Years	8,966	12.90%	86,933	10.10%	159,499	10.40%
30 to 34 Years	8,831	12.70%	81,462	9.50%	152,625	9.90%
35 to 39 Years	6,784	9.70%	66,057	7.70%	121,921	7.90%
40 to 44 Years	6,289	9.00%	61,961	7.20%	108,706	7.10%
45 to 49 Years	5,389	7.70%	59,786	7.00%	103,281	6.70%
50 to 54 years	4,790	6.90%	59,226	6.90%	102,275	6.70%
55 to 59 Years	4,231	6.10%	51,914	6.00%	88,572	5.80%
60 to 64 Years	3,615	5.20%	45,930	5.40%	79,090	5.20%
65 to 69 Years	2,877	4.10%	36,689	4.30%	62,220	4.10%
70 to 74 Years	2,011	2.90%	27,934	3.30%	46,766	3.00%
75 to 79 Years	1,851	2.70%	19,833	2.30%	33,121	2.20%
80 to 84 Years	1,037	1.50%	13,257	1.50%	22,714	1.50%
85 Years and Over	1,058	1.50%	12,536	1.50%	20,062	1.30%

Median Age	39.2	37.0	36.3
------------	------	------	------

16 Years and Over	62,775	90.20%	715,384	83.30%	1,273,051	82.90%
18 Years and Over	62,402	89.60%	699,901	81.50%	1,243,393	81.00%
20 Years and Over	61,711	88.60%	680,991	79.40%	1,209,679	78.90%
62 Years and Over	10,974	15.80%	136,773	15.90%	230,053	15.00%
65 Years and Over	8,844	12.70%	110,282	12.80%	184,852	12.00%
70 Years and Over	5,957	8.60%	73,560	8.60%	122,663	8.00%
80 Years and Over	2,095	3.00%	25,793	3.00%	42,776	2.80%

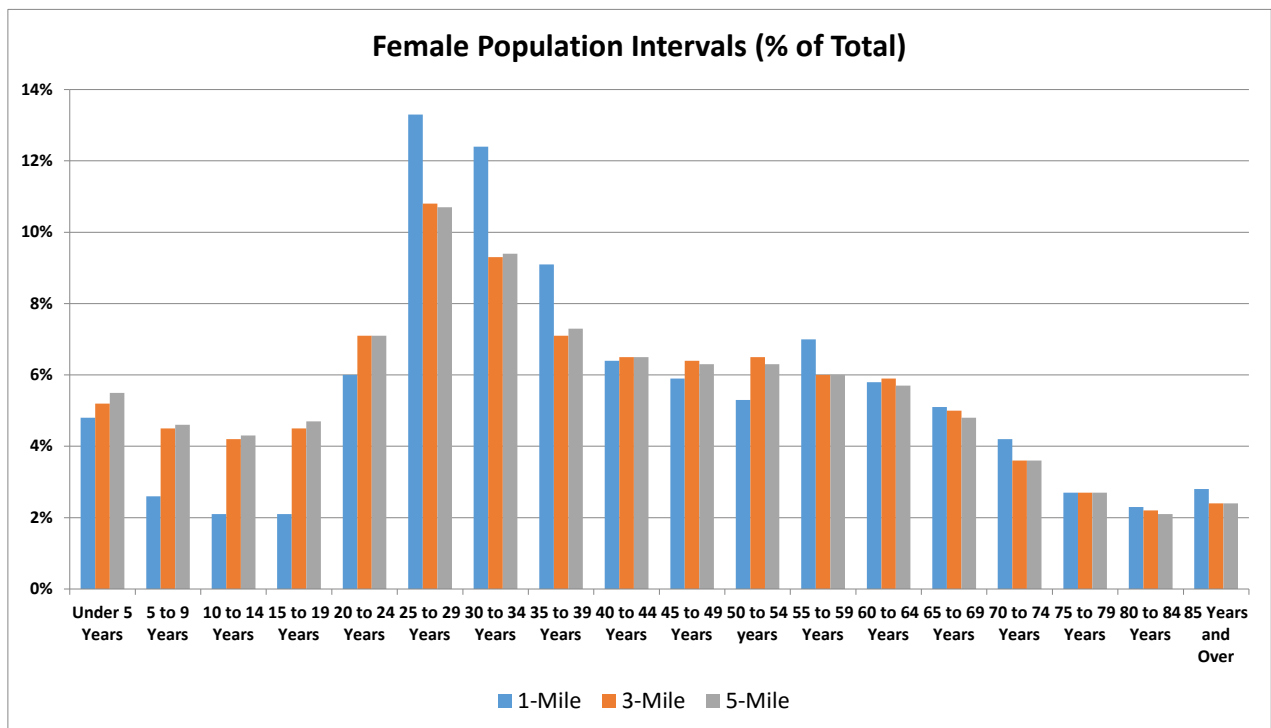


Female Demographics

	1-Mile Radius		3-Mile Radius		5-Mile Radius	
	Number	Percentage	Number	Percentage	Number	Percentage
TOTAL POPULATION	70,290	100.00%	939,060	100.00%	1,646,489	100.00%
Under 5 Years	3,377	4.80%	49,295	5.20%	89,882	5.50%
5 to 9 Years	1,836	2.60%	41,925	4.50%	75,670	4.60%
10 to 14 Years	1,488	2.10%	39,615	4.20%	71,337	4.30%
15 to 19 Years	1,469	2.10%	42,246	4.50%	77,562	4.70%
20 to 24 Years	4,228	6.00%	66,324	7.10%	117,321	7.10%
25 to 29 Years	9,326	13.30%	101,414	10.80%	176,281	10.70%
30 to 34 Years	8,725	12.40%	86,868	9.30%	155,510	9.40%
35 to 39 Years	6,409	9.10%	66,762	7.10%	119,617	7.30%
40 to 44 Years	4,487	6.40%	61,367	6.50%	107,285	6.50%
45 to 49 Years	4,144	5.90%	60,101	6.40%	103,925	6.30%
50 to 54 years	3,735	5.30%	61,244	6.50%	103,858	6.30%
55 to 59 Years	4,947	7.00%	56,781	6.00%	98,322	6.00%
60 to 64 Years	4,093	5.80%	55,193	5.90%	94,331	5.70%
65 to 69 Years	3,616	5.10%	47,205	5.00%	78,740	4.80%
70 to 74 Years	2,977	4.20%	33,709	3.60%	58,760	3.60%
75 to 79 Years	1,916	2.70%	25,730	2.70%	44,039	2.70%
80 to 84 Years	1,592	2.30%	20,644	2.20%	34,483	2.10%
85 Years and Over	2,000	2.80%	22,864	2.40%	39,878	2.40%

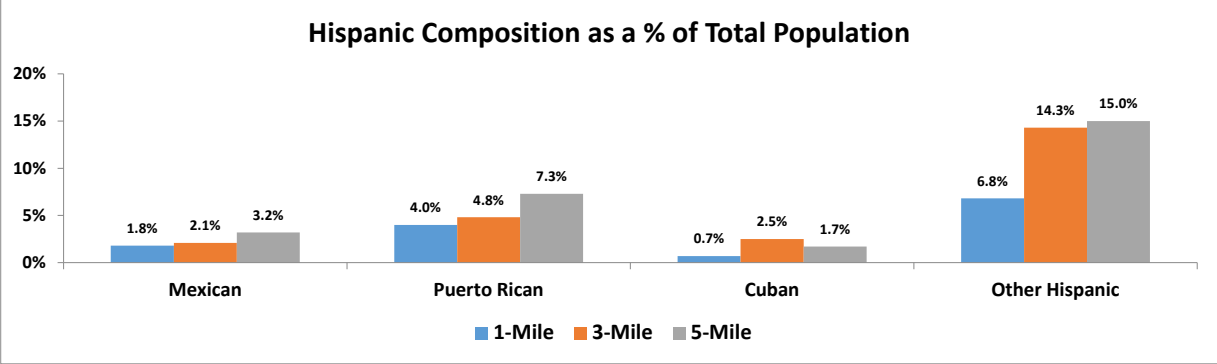
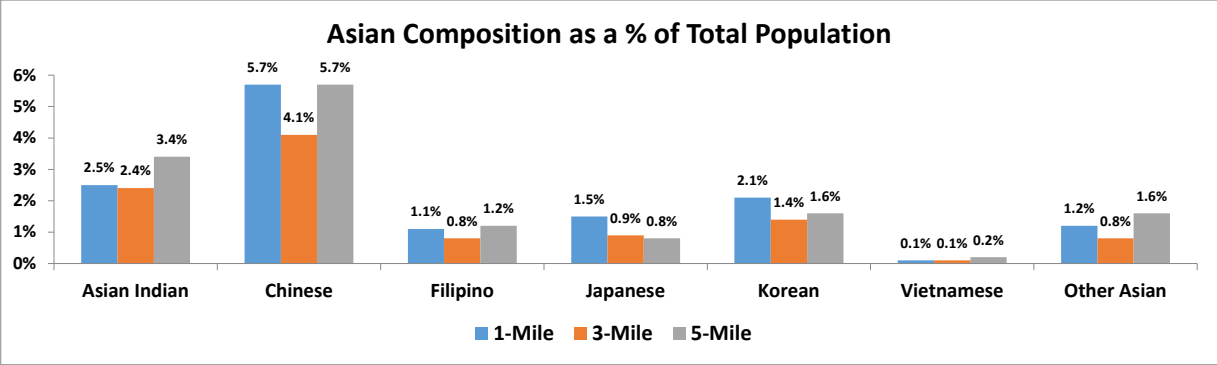
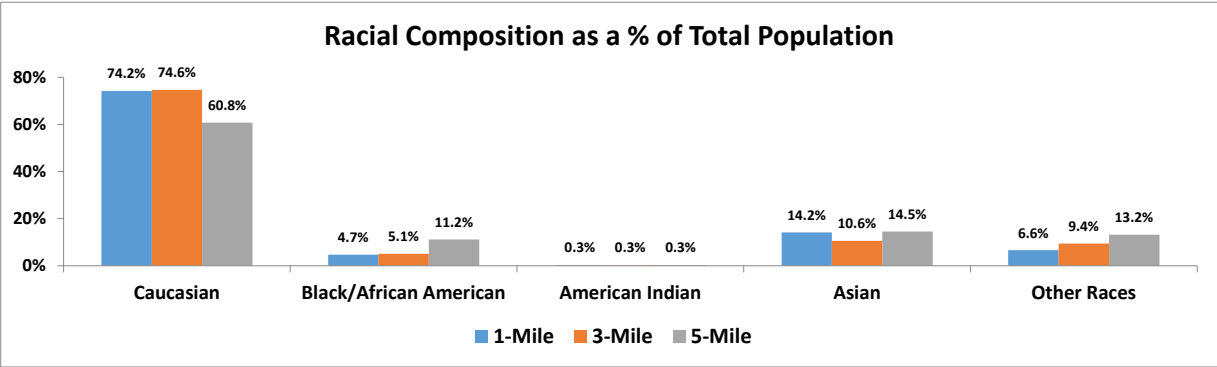
Median Age	39.1	38.4	38.1
-------------------	-------------	-------------	-------------

16 Years and Over	63,380	90.20%	800,953	85.30%	1,395,842	84.80%
18 Years and Over	63,026	89.70%	785,430	83.60%	1,367,361	83.00%
20 Years and Over	62,195	88.30%	766,206	81.50%	1,332,350	80.90%
62 Years and Over	14,303	20.30%	181,445	19.30%	310,633	18.90%
65 Years and Over	12,104	17.20%	150,049	16.00%	255,695	15.50%
70 Years and Over	8,485	12.00%	102,947	10.90%	177,160	10.80%
80 Years and Over	3,592	5.10%	43,508	4.60%	74,361	4.50%



Racial Demographics

Race	1-Mile Radius		3-Mile Radius		5-Mile Radius	
	Number	Percentage	Number	Percentage	Number	Percentage
Caucasian	103,864	74.20%	864,041	74.60%	1,424,483	60.80%
Black or African American	6,611	4.70%	58,772	5.10%	261,817	11.20%
American Indian	387	0.30%	3,195	0.30%	7,349	0.30%
Asian (Total)	19,920	14.20%	123,263	10.60%	339,086	14.50%
Asian Indian	3,428	2.50%	28,284	2.40%	79,760	3.40%
Chinese	8,022	5.70%	47,876	4.10%	133,642	5.70%
Filipino	1,568	1.10%	9,769	0.80%	28,043	1.20%
Japanese	2,050	1.50%	10,610	0.90%	18,519	0.80%
Korean	2,931	2.10%	16,279	1.40%	38,041	1.60%
Vietnamese	207	0.10%	1,661	0.10%	4,312	0.20%
Other Asian	1,714	1.20%	8,784	0.80%	36,769	1.60%
Other Races	9,127	6.60%	109,649	9.40%	311,220	13.20%
Hispanic Population (Total)	18,637	13.30%	274,287	23.70%	638,578	27.20%
Mexican	2,562	1.80%	24,277	2.10%	76,052	3.20%
Puerto Rican	5,557	4.00%	55,655	4.80%	171,202	7.30%
Cuban	972	0.70%	29,112	2.50%	38,688	1.70%
Other Hispanic	9,546	6.80%	165,243	14.30%	352,636	15.00%



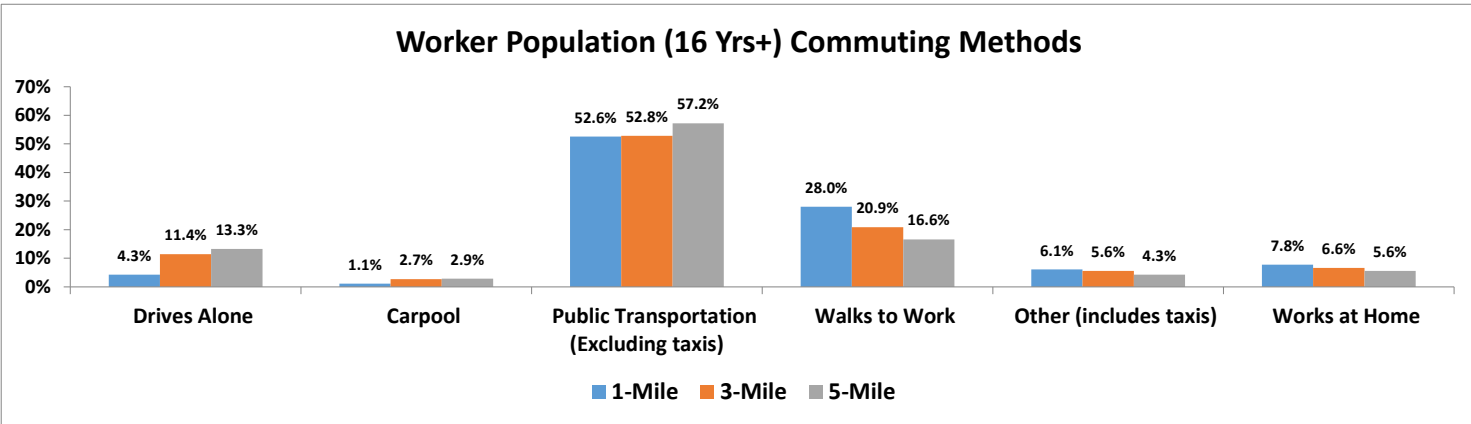
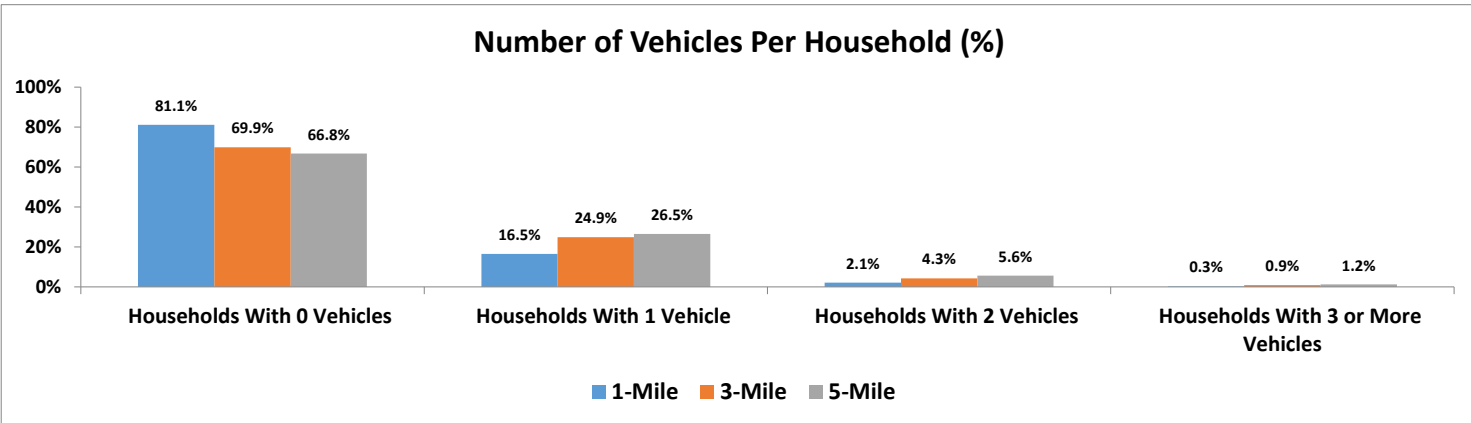
Transportation Demographics

Household Vehicle Data	1-Mile Radius		3-Mile Radius		5-Mile Radius	
	Number	Percentage	Number	Percentage	Number	Percentage
Total Households	78,918		571,387		1,043,139	
Households With 0 Vehicles	64,003	81.1%	399,219	69.9%	696,396	66.8%
Households With 1 Vehicle	13,016	16.5%	142,116	24.9%	276,257	26.5%
Households With 2 Vehicles	1,676	2.1%	24,667	4.3%	58,122	5.6%
Households With 3 or More Vehicles	223	0.3%	5,385	0.9%	12,364	1.2%
Conservative Total Vehicles Estimate**	17,037		207,605		429,593	

**Assumes '3 or More Vehicles' equals three

Commuting Statistics	Number	Percentage	Number	Percentage	Number	Percentage
Worker Population 16 Years and Older	86,758		672,212		1,255,501	
Drives Alone	3,755	4.3%	76,615	11.4%	166,451	13.3%
Carpool	973	1.1%	18,394	2.7%	36,809	2.9%
Public Transportation (Excluding taxis)	45,665	52.6%	354,674	52.8%	718,674	57.2%
Walks to Work	24,314	28.0%	140,283	20.9%	208,260	16.6%
Other (includes taxis)	5,315	6.1%	37,819	5.6%	54,568	4.3%
Works at Home	6,736	7.8%	44,427	6.6%	70,739	5.6%

Mean Commuting Time (Minutes)	27.5	29.8	32.2
-------------------------------	------	------	------



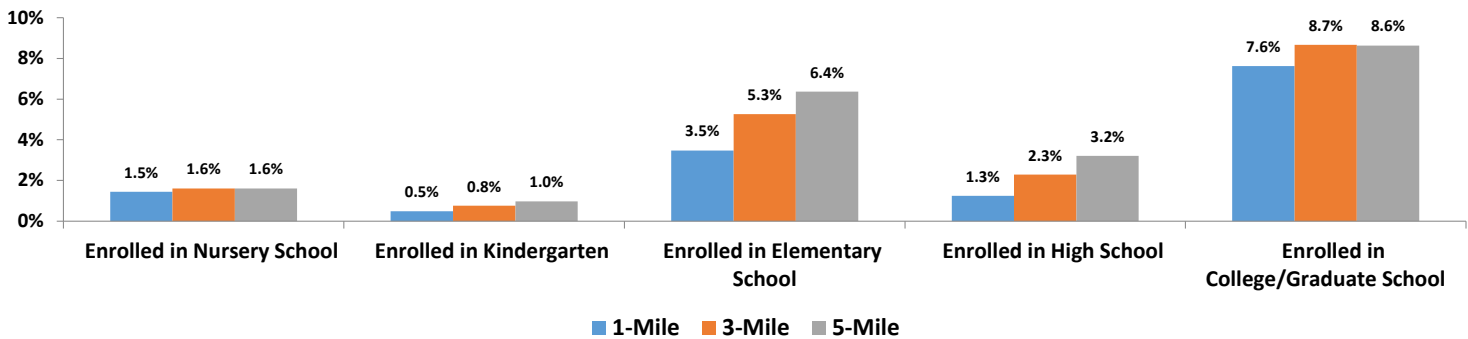
Education Demographics

School Enrollment	1-Mile Radius		3-Mile Radius		5-Mile Radius	
	Number	Percentage	Number	Percentage	Number	Percentage
Total Population	139,909	100.0%	1,158,920	100.0%	2,343,955	100.0%
Population >3 Yrs Old Enrolled in School	19,992	14.3%	215,455	18.6%	486,970	20.8%
Enrolled in Nursery School	2,029	1.5%	18,685	1.6%	37,527	1.6%
Enrolled in Kindergarten	687	0.5%	8,831	0.8%	22,863	1.0%
Enrolled in Elementary School	4,862	3.5%	60,998	5.3%	149,166	6.4%
Enrolled in High School	1,749	1.3%	26,492	2.3%	75,183	3.2%
Enrolled in College/Graduate School	10,665	7.6%	100,449	8.7%	202,231	8.6%

Educational Attainment	1-Mile Radius		3-Mile Radius		5-Mile Radius	
	Number	Percentage**	Number	Percentage**	Number	Percentage**
Population 25 Years and Older	115,710	82.7%	901,437	77.8%	1,748,586	74.6%
<9th Grade	2,448	2.1%	42,401	4.7%	129,632	7.4%
High School, No Diploma	2,661	2.3%	32,497	3.6%	110,607	6.3%
High School Graduate	9,373	8.1%	99,001	11.0%	276,532	15.8%
Some College, No Degree	9,746	8.4%	86,015	9.5%	189,657	10.8%
Associates Degree	2,984	2.6%	29,095	3.2%	72,802	4.2%
Bachelors Degree	43,012	37.2%	320,055	35.5%	538,072	30.8%
Graduate or Professional Degree	45,486	39.3%	292,373	32.4%	431,284	24.7%

***Percentages Calculated for the 25 Years and Older Population*

School Enrollment (% of Total Population)



Educational Attainment of the Over 25 Population

